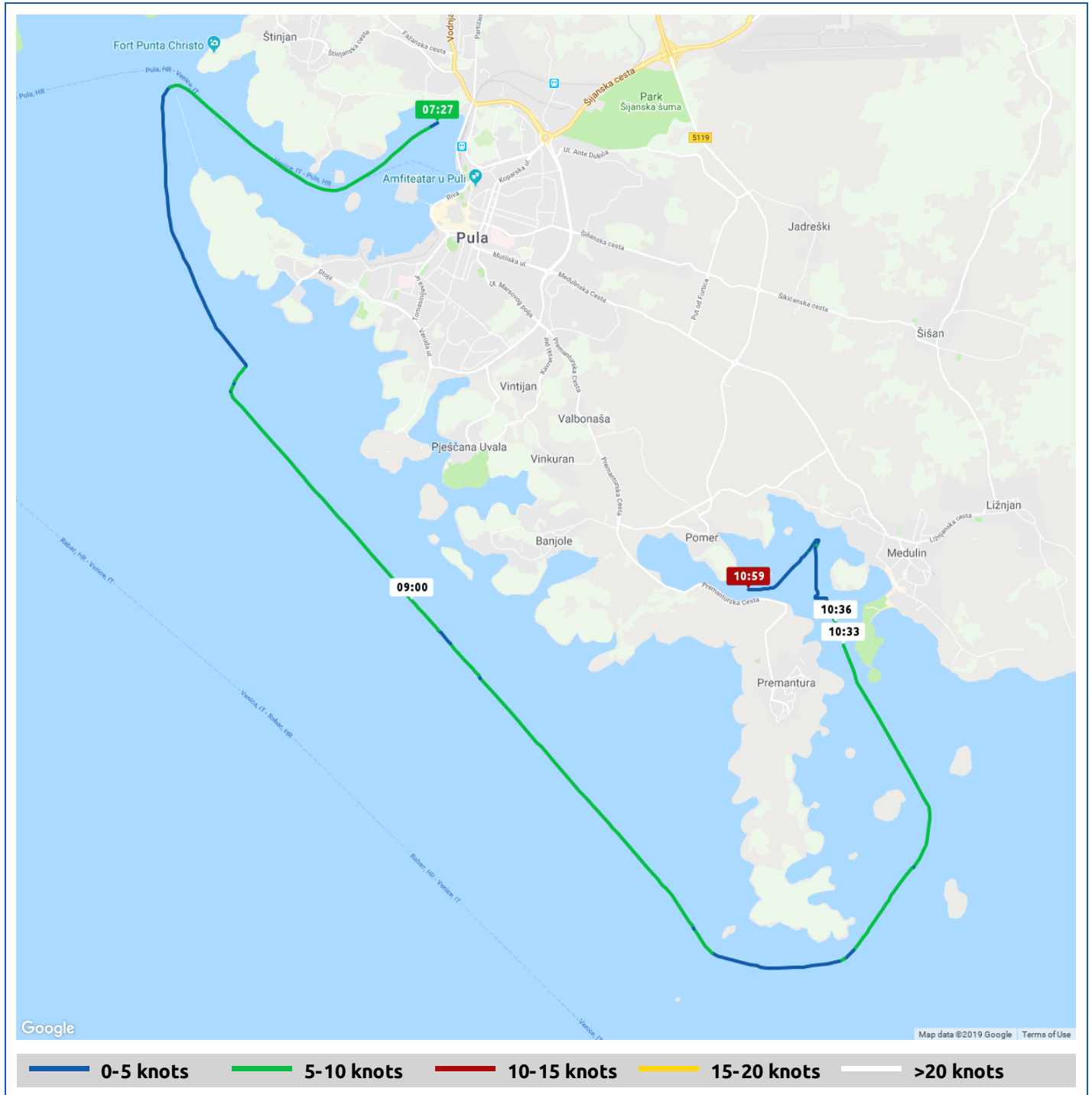





Voyages	Underway (hours)	Duration (hours)	Distance (nm)	Average Speed (knots)	Max Speed (knots)
1	3:32	3:43	18.1	5.1	5.8



Voyage	Skipper	Passengers	Commenced	Completed
Vela draga to Medulinski Zaljev	Lynda Shelley	Keith Logan	07:15	10:59

**Weather on arrival**

17.4°C, Wind 5kn W

Voyage Log	Time	From Start		Interval
		Duration (hours)	Distance (nm)	Avg Speed (knots)
Started voyage at Vela draga	07:15	0:00		
 14.7°C, Wind 4kn SSE	07:20	0:05		
Departed Vela draga	07:34	0:18	0.7	2.1
44° 50.72' N, 13° 48.09' E	08:34	1:18	5.6	4.9
 15.8°C, Wind 3kn SSW	09:25	2:10		
44° 46.68' N, 13° 53.00' E	09:34	2:18	11.0	5.4
Arrived Medulinski Zaljev	10:03	2:47	13.4	5.0
 17.4°C, Wind 5kn W	10:59	3:43		
Stopped Voyage at Medulinski Zaljev	10:59	3:43	18.1	5.0