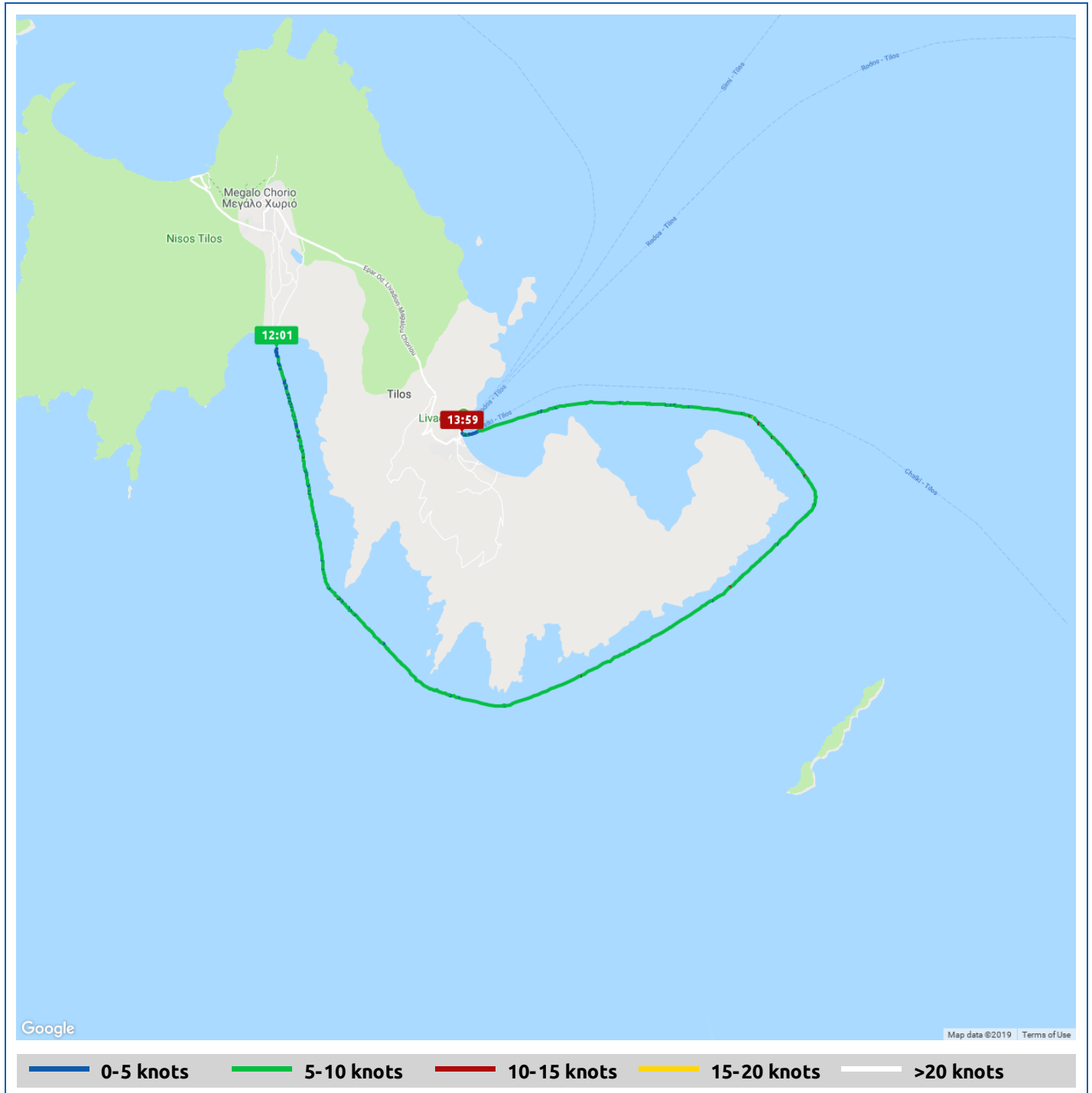






Voyages	Underway (hours)	Duration (hours)	Distance (nm)	Average Speed (knots)	Max Speed (knots)
1	1:58	2:28	12.4	6.2	7.7




Voyage	Skipper	Passengers	Commenced	Completed
Ormískos Éristos to Port Tilos	Lynda Shelley	Keith Logan	11:52	14:21

 Weather on departure 30.8°C, Wind 2kn WNW	 Weather on arrival 30.7°C, Wind 6kn WSW
--	--

Voyage Log	Time	From Start		Interval
		Duration (hours)	Distance (nm)	Avg Speed (knots)
Started voyage at Ormískos Éristos	11:52	0:00		
 30.8°C, Wind 2kn WNW	11:52	0:00		
Departed Ormískos Éristos	12:15	0:23	1.3	3.4
Departed Órmos Megálo	12:18	0:26	1.6	5.7
36° 24.10' N, 27° 27.17' E	13:18	1:26	8.1	6.5
Arrived Órmos Livádia	13:51	1:58	11.6	6.5
 30.5°C, Wind 5kn WSW	13:54	2:01		
Arrived Port Tilos	13:59	2:06	12.4	5.7
Departed Port Tilos	14:01	2:09	12.4	1.2
Departed Órmos Livádia	14:02	2:09	12.4	0.0
Arrived Órmos Livádia	14:02	2:09	12.4	0.0
Departed Órmos Livádia	14:02	2:10	12.4	0.0
Arrived Órmos Livádia	14:02	2:10	12.4	0.0
Departed Órmos Livádia	14:03	2:10	12.4	0.0
Arrived Órmos Livádia	14:03	2:11	12.4	0.0
Departed Órmos Livádia	14:03	2:11	12.4	0.0
Arrived Órmos Livádia	14:04	2:12	12.4	0.0
Departed Órmos Livádia	14:05	2:13	12.4	0.0

Voyage Log	Time	From Start		Interval
		Duration (hours)	Distance (nm)	Avg Speed (knots)
Arrived Órmos Livádia	14:05	2:13	12.4	0.0
Departed Órmos Livádia	14:05	2:13	12.4	0.0
Arrived Órmos Livádia	14:05	2:13	12.4	0.0
Departed Órmos Livádia	14:05	2:13	12.4	0.0
Arrived Órmos Livádia	14:05	2:13	12.4	0.0
Departed Órmos Livádia	14:06	2:14	12.4	0.0
Arrived Órmos Livádia	14:06	2:14	12.4	0.0
Departed Órmos Livádia	14:06	2:14	12.4	0.0
Arrived Órmos Livádia	14:07	2:15	12.4	0.0
Departed Órmos Livádia	14:07	2:15	12.4	0.0
Arrived Órmos Livádia	14:08	2:15	12.4	0.0
Departed Órmos Livádia	14:08	2:16	12.4	0.0
Arrived Órmos Livádia	14:10	2:18	12.4	0.0
Departed Órmos Livádia	14:10	2:18	12.4	0.0
Arrived Órmos Livádia	14:10	2:18	12.4	0.0
Departed Órmos Livádia	14:10	2:18	12.4	0.0
Arrived Órmos Livádia	14:10	2:18	12.4	0.0
Departed Órmos Livádia	14:11	2:18	12.4	0.0
Arrived Órmos Livádia	14:12	2:20	12.4	0.0
Departed Órmos Livádia	14:12	2:20	12.4	0.0
Arrived Órmos Livádia	14:14	2:22	12.4	0.0
Departed Órmos Livádia	14:14	2:22	12.4	0.0
Arrived Órmos Livádia	14:14	2:22	12.4	0.0
Arrived Port Tilos	14:15	2:22	12.4	-0.1
Departed Port Tilos	14:15	2:22	12.4	0.8
Departed Órmos Livádia	14:15	2:23	12.4	0.0
Arrived Órmos Livádia	14:15	2:23	12.4	0.0

Voyage Log	Time	From Start		Interval
		Duration (hours)	Distance (nm)	Avg Speed (knots)
Arrived Port Tilos	14:15	2:23	12.4	-0.1
Departed Port Tilos	14:15	2:23	12.4	0.1
Arrived Port Tilos	14:15	2:23	12.4	-0.3
Departed Port Tilos	14:16	2:24	12.4	0.0
Departed Órmos Livádia	14:16	2:24	12.4	0.0
Arrived Órmos Livádia	14:17	2:24	12.4	0.0
Arrived Port Tilos	14:17	2:24	12.4	0.0
Departed Port Tilos	14:17	2:25	12.4	0.0
Arrived Port Tilos	14:18	2:25	12.4	0.0
Departed Port Tilos	14:19	2:26	12.4	0.0
Arrived Port Tilos	14:19	2:27	12.4	0.0
Departed Port Tilos	14:19	2:27	12.4	0.0
Arrived Port Tilos	14:20	2:27	12.4	0.0
Departed Port Tilos	14:20	2:27	12.4	0.0
Arrived Port Tilos	14:20	2:28	12.4	0.0
Departed Port Tilos	14:20	2:28	12.4	0.0
Arrived Port Tilos	14:20	2:28	12.4	-0.1
 30.7°C, Wind 6kn WSW	14:21	2:28		
Stopped Voyage at Port Tilos	14:21	2:28	12.4	0.0