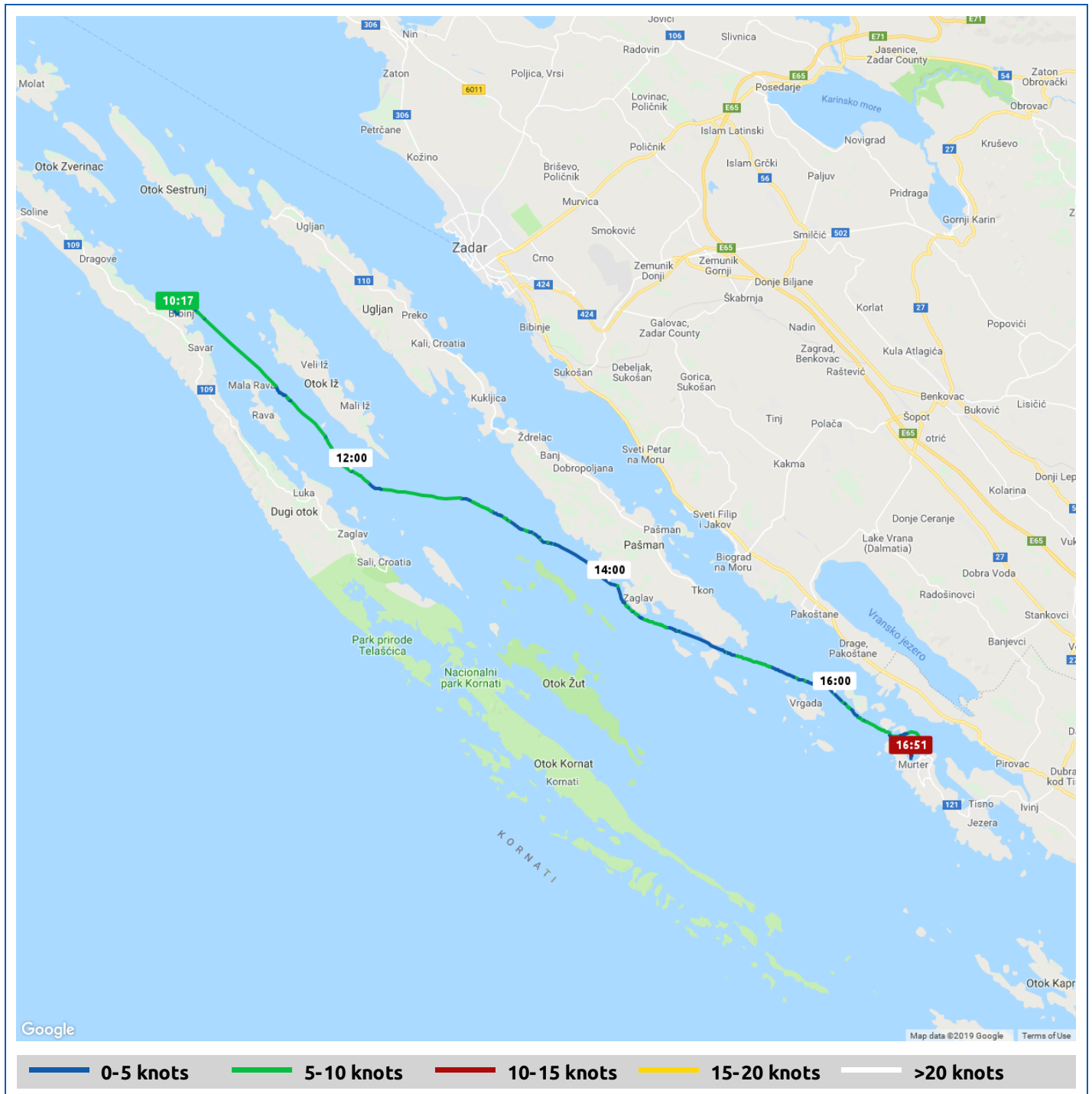


Voyages	Underway (hours)	Duration (hours)	Distance (nm)	Average Speed (knots)	Max Speed (knots)
1	6:34	6:42	32.8	5.0	7.1













Fish farms

14:38

Voyage	Skipper	Passengers	Commenced	Completed
Brbinji to Uvala Hramina	Lynda Shelley	Keith Logan	10:08	16:51

 Weather on departure 18.1°C, Wind 6kn S	 Weather on arrival 21.4°C, Wind 13kn S
--	---

Voyage Log	Time	From Start		Interval
		Duration (hours)	Distance (nm)	Avg Speed (knots)
Started voyage at Brbinji	10:08	0:00		
 18.1°C, Wind 6kn S	10:08	0:00		
Departed Brbinji	10:23	0:14	0.5	2.2
44° 1.91' N, 15° 5.16' E	11:23	1:14	5.9	5.4
 19.8°C, Wind 5kn S	12:11	2:02		
43° 58.69' N, 15° 10.64' E	12:23	2:14	11.3	5.4
43° 56.93' N, 15° 17.56' E	13:23	3:14	16.7	5.4
 20.9°C, Wind 10kn SSE	14:11	4:02		
43° 54.27' N, 15° 22.24' E	14:23	4:14	21.2	4.5
 Fish farms	14:38	4:29		
43° 52.69' N, 15° 28.09' E	15:23	5:14	25.8	4.6
 20.1°C, Wind 12kn S	16:14	6:06		
43° 50.46' N, 15° 33.64' E	16:23	6:14	30.5	4.7
Arrived Uvala Hramina	16:42	6:34	32.1	4.8
 21.4°C, Wind 13kn S	16:51	6:42		
Stopped Voyage at Uvala Hramina	16:51	6:42	32.9	5.3