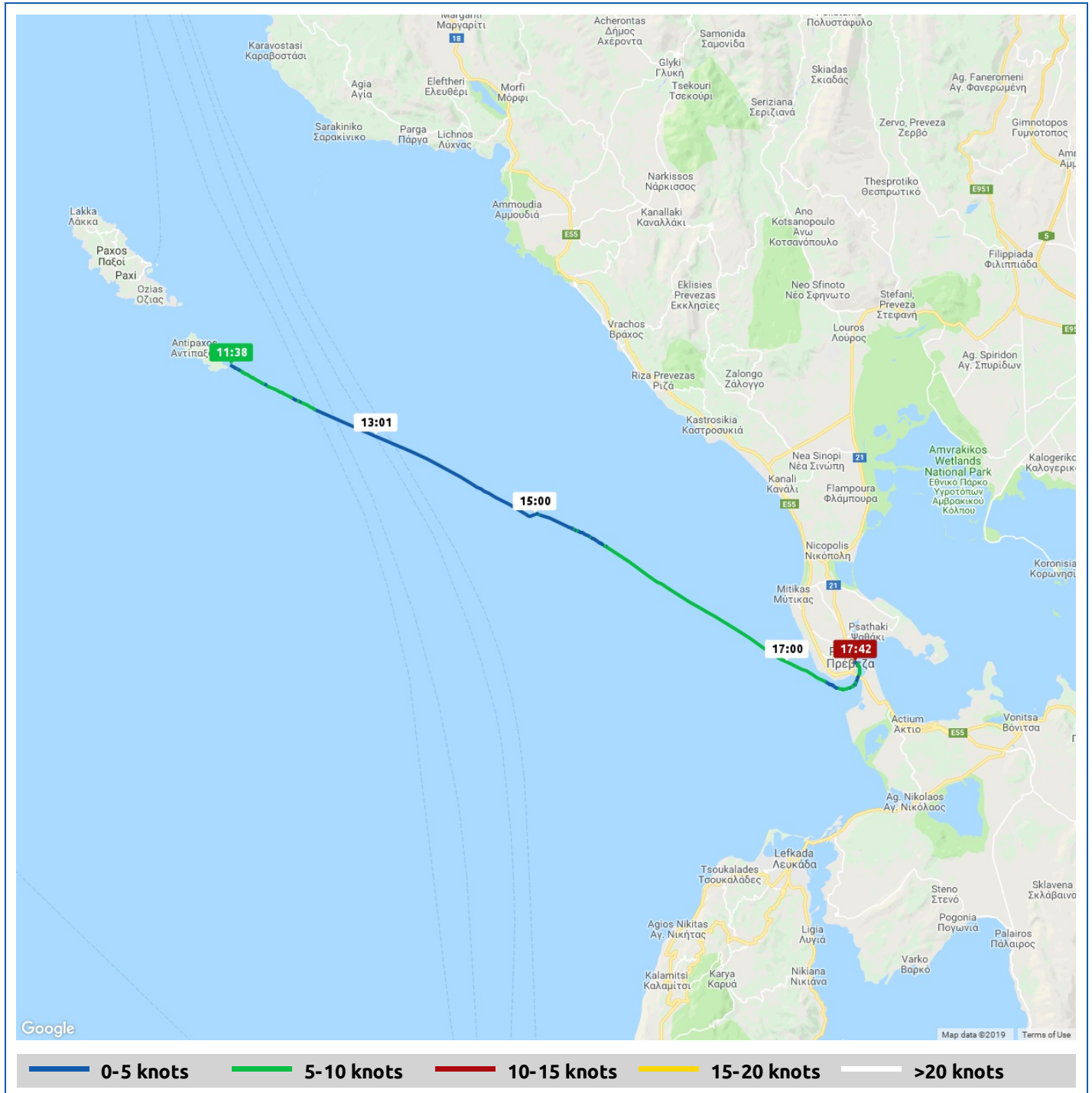








Voyages	Underway (hours)	Duration (hours)	Distance (nm)	Average Speed (knots)	Max Speed (knots)
1	6:04	6:39	27.5	4.5	6.5



Voyage	Skipper	Passengers	Commenced	Completed
39° 8.47' N, 20° 15.29' E to Órmos Preveza	Lynda Shelley		11:38	18:17

 Weather on departure 26.9°C, Wind 6kn NW	 Weather on arrival 29.3°C, Wind 13kn WSW
---	---

Voyage Log	Time	From Start		Interval
		Duration (hours)	Distance (nm)	Avg Speed (knots)
Started voyage at 39° 8.47' N, 20° 15.29' E	11:38	0:00		
 26.9°C, Wind 6kn NW	11:38	0:00		
39° 6.38' N, 20° 20.68' E	12:38	1:00	4.7	4.7
39° 4.89' N, 20° 24.96' E	13:38	2:00	8.3	3.7
 27.3°C, Wind 8kn WSW	13:40	2:02		
39° 3.32' N, 20° 28.56' E	14:38	3:00	11.6	3.2
39° 1.80' N, 20° 33.13' E	15:38	4:00	15.5	4.0
 28.6°C, Wind 11kn WSW	15:40	4:02		
38° 58.60' N, 20° 39.63' E	16:38	5:00	21.6	6.0
38° 57.10' N, 20° 45.57' E	17:38	6:00	27.2	5.7
Arrived Órmos Preveza	17:39	6:01	27.4	5.8
 29.5°C, Wind 14kn WSW	17:45	6:07		
 29.3°C, Wind 13kn WSW	18:17	6:39		
Stopped Voyage at Órmos Preveza	18:17	6:39	27.6	0.3