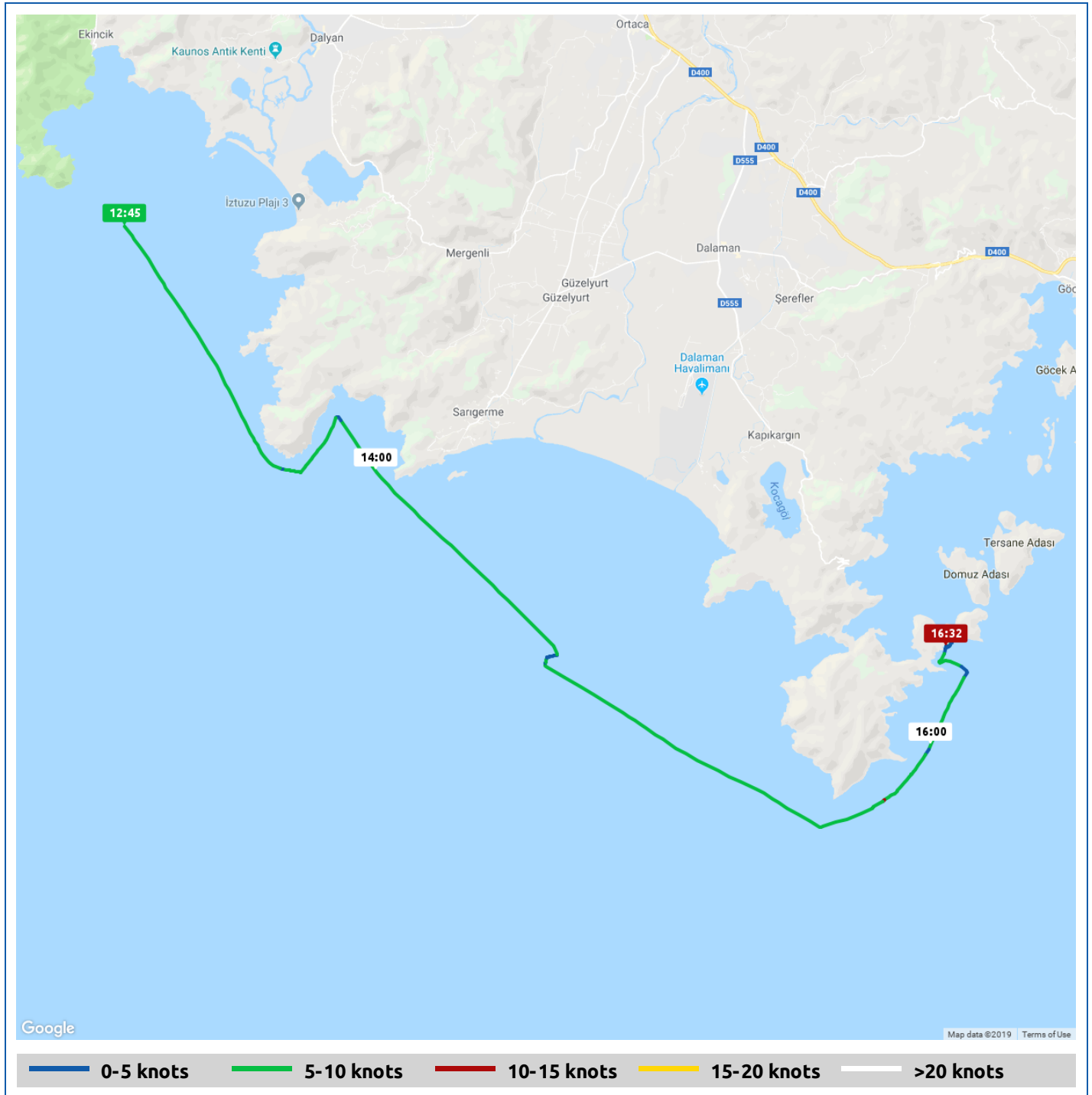




Voyages	Underway (hours)	Duration (hours)	Distance (nm)	Average Speed (knots)	Max Speed (knots)
1	3:46	4:30	25.8	6.8	9.1












16:02

Voyage	Skipper	Passengers	Commenced	Completed
Ekincik to 36.6385°, 28.8914°	Lynda Shelley		12:45	17:16

	
<b>Weather on departure</b>	<b>Weather on arrival</b>
29.4°C, Wind 14kn WSW	27.2°C, Wind 19kn W

Voyage Log	Time	From Start		Interval
		Duration (hours)	Distance (nm)	Avg Speed (knots)
Started voyage at Ekincik	12:45	0:00		
Departed Ekincik	12:45	0:00	0.0	6.8
 29.4°C, Wind 14kn WSW	12:46	0:00		
 Gennaker up getting along quite nicely	13:16	0:30		
 Bit of a nasty beam on swell	13:24	0:38		
36° 42.43' N, 28° 38.63' E	13:45	1:00	7.0	7.0
36° 37.75' N, 28° 44.16' E	14:45	2:00	14.3	7.4
 27.0°C, Wind 21kn WSW	14:49	2:03		
36° 35.13' N, 28° 51.62' E	15:45	3:00	21.2	6.9
 Saw 32kts!	16:03	3:17		
36° 38.31' N, 28° 53.48' E	16:45	4:00	25.9	4.6
 27.2°C, Wind 19kn W	16:53	4:08		
 27.2°C, Wind 19kn W	17:16	4:30		
Stopped Voyage	17:16	4:30	25.9	0.0