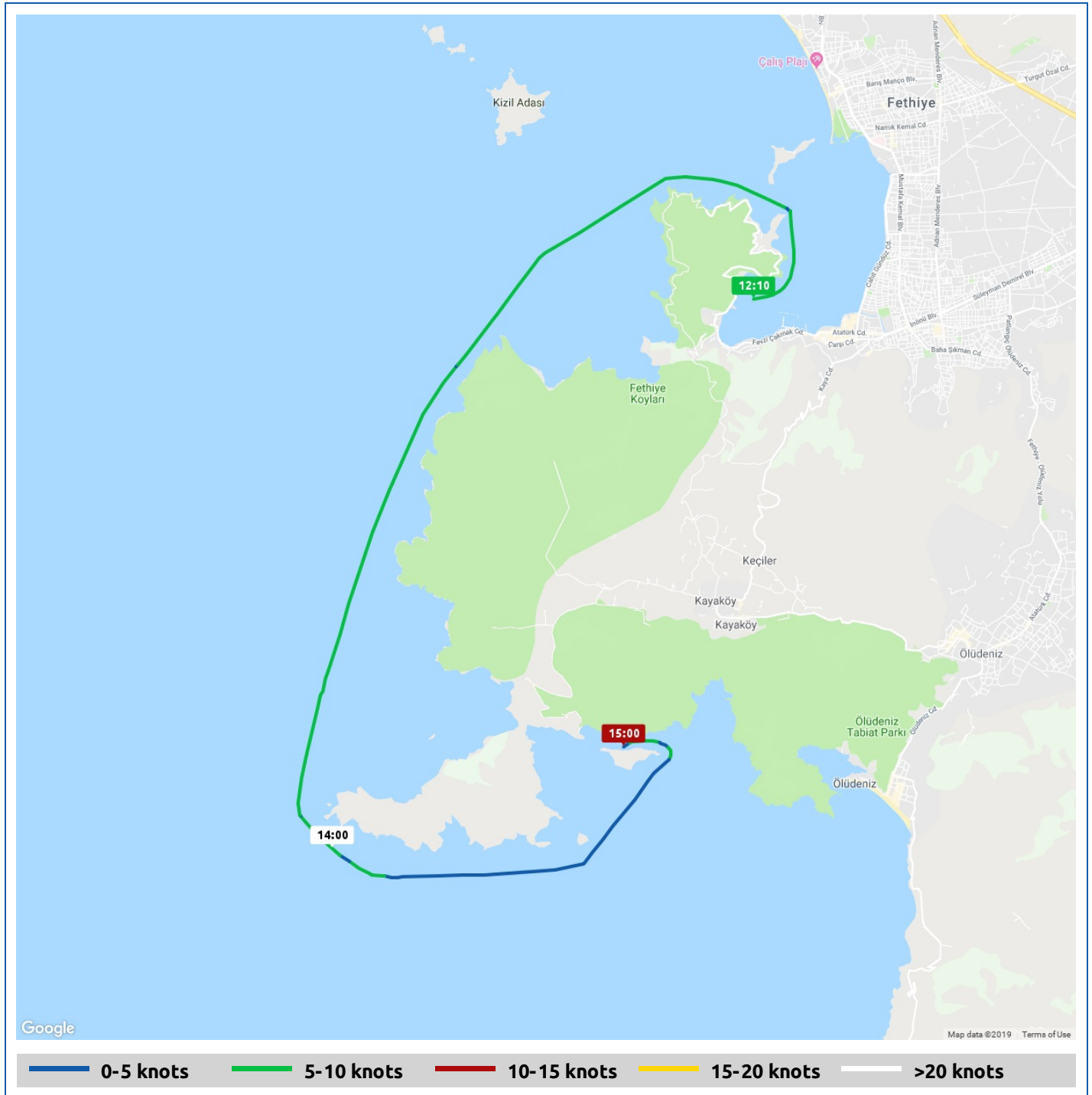









Voyages	Underway (hours)	Duration (hours)	Distance (nm)	Average Speed (knots)	Max Speed (knots)
1	2:49	3:39	14.6	5.2	6.0



Voyage	Skipper	Passengers	Commenced	Completed
Fethiye to 36.5550°, 29.0684°	Lynda Shelley	Keith Logan	11:57	15:36

 <p>Weather on departure 30.2°C, Wind 14kn NNE</p>	 <p>Weather on arrival 30.0°C, Wind 8kn NNW</p>
--	---

Voyage Log	Time	From Start		Interval
		Duration (hours)	Distance (nm)	Avg Speed (knots)
Started voyage at Fethiye	11:57	0:00		
 30.2°C, Wind 14kn NNE	11:57	0:00		
Departed Fethiye	12:07	0:10	0.0	0.0
Arrived Fethiye	12:07	0:10	0.0	0.0
Departed Fethiye	12:07	0:10	0.0	0.0
Arrived Fethiye	12:08	0:11	0.0	0.0
Departed Fethiye	12:10	0:13	0.0	0.2
36° 36.62' N, 29° 1.77' E	13:10	1:13	5.6	5.6
 28.1°C, Wind 13kn NW	13:57	2:00		
 Gennaker up finally	14:01	2:04		
36° 32.06' N, 29° 1.55' E	14:10	2:13	11.1	5.5
 Black clouds, thunder and lightening and lots of paragliders	14:35	2:38		
36° 33.30' N, 29° 4.10' E	15:10	3:13	14.7	3.6
 30.0°C, Wind 8kn NNW	15:36	3:39		
Stopped Voyage	15:36	3:39	14.7	0.0